

The Whole Works 2022

Annual Report to the Emmet County Board of Commissioners from the Emmet County DPW Board & Staff

Inside...

1. Financials & Statistics
2. Recycling
3. Recycler of the Year
4. Waste
5. Staffing
6. Future Funding
7. Organics



Financials

2022 REVENUES

RECYCLING PROGRAMS

Sale of Materials	\$1,008,581.78
Curbside Recycling	\$496,991.60
Out-of-County Fees	\$446,641.07
Drop-off Center For-Fee Recycling	\$228,684.07
Compost, Mulch, & Bin Sales	\$23,174.00
From Waste Tip Revenues	\$253,775.99
County General Fund	\$0.00
Other Income minus Write Off (\$0)	\$40,169.74
Grants	\$12,700.00
Sale of County Property	\$3,443.75
Subtotal	\$2,514,162.91

WASTE TRANSFER STATION

Charges for Services	\$3,355,640.71
County General Fund	\$0.00
Interest Income	\$4,556.88
Clean Sweep Grant Funds	\$7,000.00
Other Income*	\$53,394.85
Subtotal	\$3,420,592.44

TOTAL DPW REVENUE.....\$5,934,755.35

2022 EXPENSES

RECYCLING PROGRAMS

Personnel	\$1,197,960.62
Contractual Services	\$180,936.39
Operations	\$639,945.48
Depreciation	\$477,217.48
Subtotal	\$2,496,059.97

WASTE TRANSFER STATION

Personnel	\$640,944.79
Contractual Services	\$321,457.52
Landfill Fees	\$1,777,027.20
Operations	\$142,354.50
Depreciation	\$215,091.87
Principal & Interest Payment	\$24,369.76
Subtotal	\$3,121,245.64

TOTAL DPW EXPENSES\$5,617,305.61

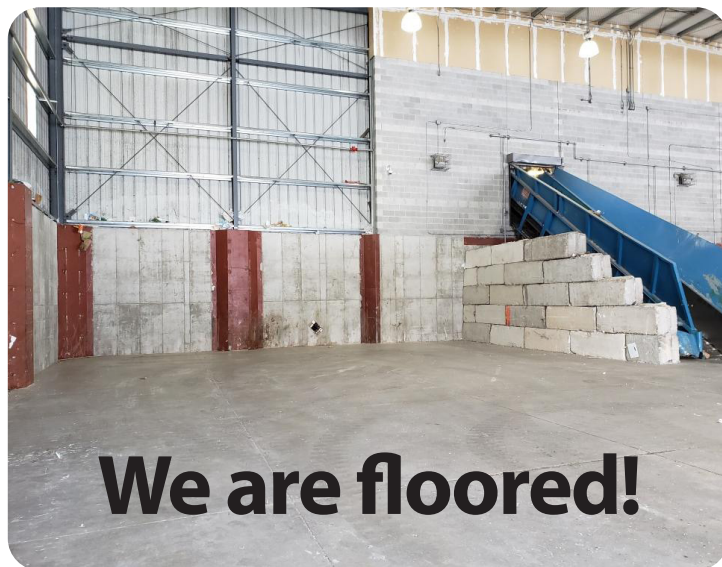
NOTES

*Transfer Station "Other Income" includes monies from business and out-of-county users of the Household Chemical Drop-off (HCD) program and donations to the HCD program.

ACTIVE GRANTS in 2022

Petoskey-Harbor Springs Area

Community Foundation	\$7,200.00
MDARD CleanSweep	\$7,000.00
H. M. Hoffman Consulting, Inc.	\$5,000.00



We are floored!

Early in the year, we saw something that we hadn't seen in almost 10 years -- the tipping floor!

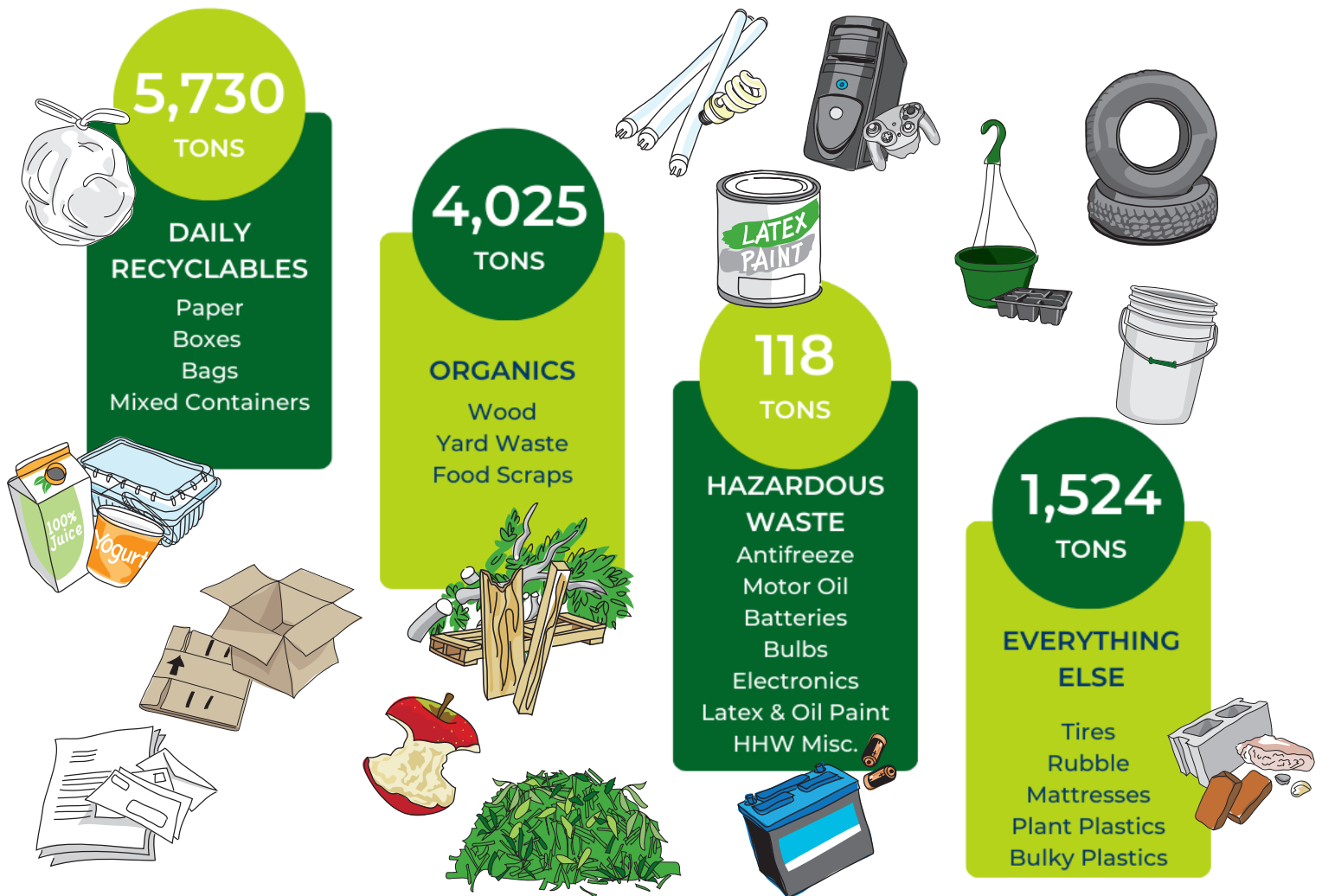
This is the area where all of our trucks tip incoming materials and they are stored until we sort them.

Thanks to our incredible processing team and new sort line with robots, we were so efficient that we cleaned the floor out and had a fresh start for the remainder of 2022.



January 21, 2021

Recycling Stats



Fire Extinguisher Training

Annual competencies for our crew include safety training. With an uptick in near miss battery fires at our facility this year, it's imperative for staff to be prepared in case of fire.

Training was taught by our very own Transfer Station Attendant Evan Thompson, Certified Fire Instructor/ Assistant Fire Chief Village of Mackinaw City Fire Department.



Recycle Processing Operator Eric Franklin demonstrates that First Alert 5 b:c residential fire extinguishers might be small, but they are mighty and they get the job done!

Below: Curbside Recycling Driver Adam Machelski demonstrates P.A.S.S. (Pull, Aim, Squeeze, Sweep) during safety training in October.



Recycling



Three hundred and fifty-seven people toured the Emmet County Recycling Pleasantview Drop off Center in 2022. Media, area schools, businesses, recycling entities, governmental representatives and local leadership made up the various groups - you too can sign up for a public tour! Visit EmmetRecycling.org for more information.



Merlin the Aussie Shepherd thinks his family's Emmet County Recycling tote is his bed! Silly dog, that's for your mixed containers! Thanks to Liz Balliet for this fun photo.

Emmet County Recycling represented at 32 EVENTS



Emmet County Fair

22,000 attendees over a series of six days - that's a lot of recyclables!



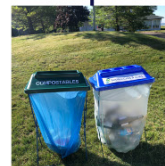
Harbor Springs 4th of July Celebrations

Parade Route & Paul Revere 5k



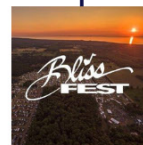
Chamber Business Expo

Staff enjoyed the return of the event following a two year hiatus.



Four Weddings

We love that our community members are including recycling and composting in their weddings!



Three days of Blissfest

Estimated 5,000 attendees
78 yards = 2.63 tons
of recyclables recovered!



LTBB traditional events

Servicing these events allows for fostering of intergovernmental partnerships and provides recycling & composting opportunities for an underserved population.



Community Events

Taste of Harbor Springs
September 17, 2022

Little Traverse Historical Museum
Corn Roast
August 19, 2022

Resource Recycling Recap

DPW Director, Andi Tolzdorf, was given the opportunity to attend the Resource Recycling Conference in Austin, TX in August to speak on a panel entitled “Fresh Ideas to Inspire Progress.” She shared about our MRF upgrades and the impact that robotics have had on our operations since their installation in 2020.

“Anybody that knows about robotics knows that there is a lot we’re asking them to do,” she told a crowd of about 140 people.

The line was engineered to include a surge hopper after the robots, allowing staff to put the system into “loop mode” and re-run materials from the hopper through the robots, giving the machines multiple chances to pick the targeted recyclables until all that remains is residue, Tolzdorf said. The capability frees up the manual sorters to move to the facility’s fiber line while the robots do their work.

The setup is distinct from many other container lines, she noted, and it improved the container-line efficiency by about 60%.



Carton Council

The Carton Council recognizes that there are a lot of communities who do not recycle cartons. Emmet County is one of the programs who proudly does recycle this product.

We collect and sort cartons from curbside, drop sites and mail in programs and then we send them to Great Lakes Tissue in Cheboygan, Michigan where they are made into new tissue products.

These pictures show how popular the mail in carton program is. Nearly every day we receive at least one box of cartons from somewhere in the country.

Find out more about Carton Council at EmmetRecycling.org.



Recycler of the Year Award 2022

Manna Food Project



Emmet County Recycling presented its 2022 Recycler of the Year Award to the Manna Food Project. As Lindsey Walker, Emmet County Recycling's commercial accounts coordinator, put it, "The Manna Food Project is an exemplary leader in waste reduction. They really do it all."

The EPA encourages best-practices in waste management and food recovery by clearly ranking options from best to worst on "hierarchies." (Think of the food pyramid flipped on its tip, with the best option located at the top.) Manna stands out for taking on the strategies ranked better than ordinary recycling and composting.

The popular phrase, "reduce, reuse, recycle," captures the ranking of these options on the EPA's "Waste Management Hierarchy": reducing is even better than reusing, which is better than recycling. All of these are far better than landfilling or burning waste.

Like nearly every operation of size, the Manna Food Project recycles a lot of cardboard: an average of 11 tons of cardboard a year! But before they recycle boxes they use the better option "up the hierarchy" by reusing. Specifically, they reuse banana boxes to pack food bound for the 42 food pantries they serve. "Banana boxes to us are a commodity," said Bob MacKenzie, Manna's Rescue Program Manager.

They also supply numerous area schools with backpacks of food that students at risk of hunger can pick up on Fridays to ensure they have enough to eat over the weekend. Manna packs the bags for each school into used boxes which the

schools then return for reuse. MacKenzie estimates that each box is used eight to ten times before it wears out.

But where the Manna Food Project really shines is in managing food that might otherwise be landfilled. One of the top options on the EPA's Food Recovery Hierarchy is using such food to "feed hungry people" and Manna does it on a grand scale. Five days a week, they collect donations of surplus food from local farms, grocery stores, restaurants, and bakeries. (Examples of these food rescue partners are featured on their website). This program rescues more than 400,000 pounds of food each year!

Next down the Food Recovery Hierarchy is feeding farm animals. When Manna has large quantities of food unfit for humans but still good, they try to provide it to farmers to feed animals, typically pigs.

And should some of the food go bad before it can be distributed—as some of the 6,000 pounds of potatoes had—Project volunteers will sort it out from the good and put it in Manna's compost carts. The carts are provided as part of Emmet County's commercial food-scrap collection program. The food scraps are picked up by the County once a week for delivery to the Pleasantview Road Drop-off Center. There they are combined with dry leaves and composted. The County reports that the Manna has composted over 30,000 pounds of food in just four years.



Emmet County Recycling asks everyone to join them in thanking the Manna Food Project's staff, board, and volunteers for going the extra mile to use the best options in waste management and food recovery.

Hazardous Waste

3 Household Chemical Drop-off Events

509 Appointments

46,552 Pounds Collected at Events

70,440

Pounds via Year-Round Collection Area
at Pleasantview Road Facility
includes motor oil, oil filters, antifreeze,
batteries and fluorescent and LED light bulbs



Jayna Steffel, Transfer Station Superintendent, pours gasoline [also known as bulking] at the 2022 Hazardous Household Waste event.

Donate!

Suggested: \$20/vehicle
Our avg. cost: \$80/vehicle

Thank you!

Starting in 2020, we more actively requested donations in our printed program handouts, webpage, advertisements and e-mail appointment confirmation. The above sign was also posted at customer check-in at HHW events. Generous 2022 Household Chemical Drop-off customers responded with a record \$3,917.90 in donations.

Waste Transfer Station

VOLUME

136,809.5 Yards Incoming

5% increase from 2021



All of the trash in Emmet County has to go somewhere! And Emmet County operates a transfer station, but not a landfill.

This is why it's important that we maintain public/private partnerships with landfill owners in the area. We have had a contract with GFL, formerly Republic Services, which operates Elk Run Landfill in Onaway for 21 years. The contract was ending this year, and it was determined that it was in the County's best interest to extend the contract with GFL for an additional 10 years.

We collect garbage at the transfer station, we compact it into 120 yard transfer trailers and they are responsible for the rest. They haul it to the landfill and responsibly operate the landfill. We are proud to continue this partnership with GFL.

Here in Emmet County, there is no such thing as away, our garbage goes to Onaway!

STAFFING GOODBYES



Mark Freske had been with us for over 17 years as a transfer station attendant and driver. Mark was well known for doing the jobs that nobody else wanted to do. He was very versatile and knowledgeable about all transfer station operations.



John Harrington was a transfer station attendant and driver with us for 20 years! He was always dedicated to improving our facility and programs and was key in training new attendants. We miss his insights, knowledge and sense of humor!



Theo Marshall joined us this summer to be an additional hand around the transfer station and to help clean up drop sites.



Jon Z was a curbside driver, food scrap driver and all around fill-in guy.



Zack Elya left ECR after eight years with us, both as a temp and county employee. He was extremely knowledgeable in recycle processing operations.



Wendy had an impactful three years with us. She created great systems and cultivated great employees. We also appreciate her accomplishments in the areas of safety.



In Kate's 22 years with ECDPW, she developed all of the department's branding and messaging; including our website, social media, flyers, brochures, signs, annual report (until this one!), 4th grade tours and much more. Beyond that, Kate's expertise towards the circular economy and her social and environmental awareness were a great addition to our team.

THANKS TO ALL!

HELLO AND WELCOME



Dwight

We welcome new transfer station attendants/drivers Evan Thompson and Dwight Burdine. If you see them at the gatehouse, drive through bay or out on the road, be sure to say hi!



Evan

MacKenzie is our new administrative assistant, as Jayna was promoted to Superintendent of the facility. MacKenzie comes from a background of numbers and customer service and is already excelling in her role here. She is responsible for all accounting and billing for DPW.



MacKenzie

Adam Machelski is our newest curbside recycling and food scrap truck driver. Adam shows up to work every day with a big smile and a great attitude.



Adam

Noelle joined us in October and hit the ground running. She was quick to pick up on all communications tasks and jumped right into leading school tours. She already has been a great addition to our team.



Noelle

CONGRATS



Jayna

Jayna has been with the department for 10 years and made the switch from the office to the facility. She now oversees all staff and operations out there. This role brought her new hours, new responsibilities and new challenges, but she loves it and wouldn't change it for the world!



Eric

Eric Franklin was promoted from a recycle processor to a floor operator following Zack's departure. He has been doing a great job with his new responsibilities.

Future Funding

The upcoming year holds great promise in the world of recycling and materials management.

Part 115 updates

Governor Whitmer signed an eight bill package on December 22, 2022 to update Michigan's solid waste laws, which has been more than six years in the making.

Part 115 will shift the priority from solid waste to landfill diversion and materials management. Counties will be required to update their Solid Waste Management Plans, now called Materials Management Plans, for the first time in 20 years.

Materials Management County Engagement Grants (MMCE)

As the state prepares for future planning, the goal is to transition from Solid Waste Management Planning to a more comprehensive Materials Management Planning process.

With Networks Northwest leading the project, the counties in the region are working together to assess needs in the area.

Emmet County received 237 responses in the MMCE survey that was shared via e-newsletter and social media. Thanks to all that participated.

More to come in 2023!

EPA Funding

The EPA has announced recycling specific grants that will benefit programs like ours all over the country.

ECR is working on applying for one of these grants in early 2023 for program improvements.



MICHIGAN DEPARTMENT OF
ENVIRONMENT, GREAT LAKES, AND ENERGY

EGLE announces a handful of grants each year dedicated to improving recycling. This year we applied for two grants:

1. Infrastructure

ECR was awarded a grant to purchase two additional 30 yard cardboard bins for our drop sites. We can never have enough cardboard collection capacity!



2. Electronics

We accept batteries for recycling within our hazardous materials recycling area year-round. Household batteries are free for residents, and for a fee from businesses.

Additionally, we accept batteries from other counties households (Cheboygan and Presque Isle).

ECR collaborates with seven area businesses in Emmet County where household batteries can be dropped off during business hours at the following stores:

Alanson: W.W. Fairbairn & Sons

Harbor Springs: Meyer Ace Hardware and Preston Feather

Pellston: Cook's Hardware

Petoskey: Meyer Ace Hardware and Preston Feather

Within the last year, our facility has experienced three battery fires. Additionally, our current vendor, Battery Solutions Inc. is cracking down on lithium battery transportation per MDOT, and our operation is struggling to meet those current requirements.

EGLE has awarded Emmet County DPW a grant for the battery collection program and battery recycling education with the goal to better manage our current collection operation and increase education efforts on lithium battery recycling.

Petoskey-Harbor Springs Area Community Foundation Grant Awarded

Nextcycle Michigan

The State of Michigan has launched an innovative program called Nextcycle, with the goal of increasing recycling throughout the state. This program has multiple tracks for applicant placement. Emmet County Recycling (ECR) is involved in the Intergovernmental Initiatives and Public Private Partnerships (I2P3), Roads, and MICROS tracks.



I2P3

ECR director Andi Tolzdorf served on the technical advisory panel of this track which includes projects submitted by governmental entities: counties, council of governments, and universities.

Roads

ECR's end market expert, Lindsey Walker, served on the technical advisory panel for the roads track. ECR is also a partner on a project submitted by American Classic, which aims to use recycled shingles in road projects. The goal is to have a closed loop system where Emmet County shingles are used in local roads.

MICROS

This was a \$10,000 grant awarded with the intention to study operational efficiencies within ECR's compost operations. ECR provides curbside food scrap collection from businesses, operates a compost facility, and sells finished compost to the public.



In the fall of 2021, Emmet County Recycling applied for a grant from the Petoskey-Harbor Springs Area Community Foundation to update directional and educational signs, as well as pavement arrows at the Pleasantview Drop Off Center.

Nineteen signs were created and installed for improved wayfinding around the facility as it has proven difficult to navigate. The goal was to create an environment that would be more welcoming, user-friendly and safer for residents.



Organics

Compost Operator Training



US Composting Council®

In 2022, Emmet County Recycling became an official dues paying member of the United States Composting Council. USCC is

THE national go-to for all things public, private and on farm composting. Aligning ourselves with the USCC as public sector members and our USCC State Chapter of the Michigan Organics Council helps move food waste reduction, reusing and composting forward for not only the residents and businesses of Emmet County, but for the NW region and State as a whole.

After four years of waiting, the USCC brought Compost Operator Training to Michigan in August. Our thrifty, persistent composting team of Jayna Steffel, new facility superintendent, and Lindsey Walker, commercial accounts, were certified after an intensive, fun, scientific and absolutely relevant USCC Compost Operator Training.



Armed with knowledge from the training and compost operation site visits, our team was excited to implement changes for that fall's inbound leaves (the bulk of the material we receive is in the Fall) and also plans for implementation into 2023.



One month after the training, The MRC advertised/sponsored a statewide compost facility tour and on September 13th, Emmet County Recycling had 13 people representing a large geographic area from Ishpeming in the UP to Antrim County to the south.

Interest in EC model of food waste reduction commercial and residential collection service is growing and getting noticed.



Table to Farm: Bringing 3.3 MILLION pounds of food scraps full circle



Since the inception of Emmet County Recycling food scrap collection in 2015, businesses and community members have contributed over 3.3 million pounds of pre and post-consumer food scraps via curbside and community cart collection.

These scraps have been diverted from landfill, made into ECR compost, and placed back into the circular economy for farms, gardeners, and local road construction projects.

When food waste is landfilled, it will decompose anaerobically, releasing methane, a greenhouse gas that contributes to climate change. When these valuable scraps are composted with yard waste and leaves, it is made into compost with the power to capture greenhouse gases and sequester carbon in the soil. The cycle continues!



In 2022, our community has diverted 627,508 pounds of food and floral scraps from landfill. To put this into perspective, diverting this amount would be the equivalent to removing 101 passenger vehicle emissions from the road for an entire year. Not convinced? If we didn't divert from landfill, it would be similar to consuming an additional 19,733 cylinders of propane.



Imagine the exponential possibilities if we all do our part to conserve our resources for future use.

